



HYDRO BAN® Preformed Bench

DS-067.0-0314

**Globally Proven
Construction Solutions**



1. PRODUCT NAME

HYDRO BAN® Preformed Bench

2. MANUFACTURER

LATICRETE International, Inc.
1 LATICRETE Park North
Bethany, CT 06524-3423 USA

Telephone: +1.203.393.0010, ext. 235
Toll Free: 1.800.243.4788, ext. 235
Fax: +1.203.393.1684
Internet: www.laticrete.com

3. PRODUCT DESCRIPTION

HYDRO BAN Preformed Bench is a component of the expanded HYDRO BAN line of waterproofing products that allow for high quality rapid shower installations. The HYDRO BAN Preformed Bench is made from high-density expanded polystyrene with a waterproof finish. The HYDRO BAN Preformed Benches are 100% waterproof and ready-to-til.

Materials: Mortar mix for leveling pan area, 1/2" x 1/2" (12mm x 12mm) square notched trowel, polymer fortified thin-set and HYDRO BAN Adhesive & Sealant.

Advantages

- Lightweight and durable, easy to transport, handle and adjust during installation
- Factory installed, code approved waterproofing meets ANSI A118.10 requirements
- Ready to tile
- Multiple design options and sizes available adding utility and value to the shower installation
- Component of LATICRETE® Lifetime Tile & Stone System Warranty*
- Works in conjunction with most LATICRETE tile and stone installation materials

* See DS 230.99 for complete warranty information

Uses

- Interior and exterior use
- Fountains and water features

- Shower stalls and tub surrounds
- Industrial, commercial and residential

Suitable Substrates

- Concrete
- Cement backer board **
- Cement mortar beds
- Pre-Sloped shower pans
- Ceramic tile or stone

** Consult cement backer board manufacturer for specific installation recommendations and to verify acceptability for exterior use.

Packaging

All HYDRO BAN Preformed Benches are 20" (508mm) in height.
11.5" x 11.5" (29 cm x 29 cm) Square
35" x 11.5" (89 cm x 29 cm) Rectangle

Limitations

- Adhesives/mastics, mortars and grouts for ceramic tile, pavers, brick and stone are not replacements for waterproofing membranes. When a waterproofing membrane is required, use HYDRO BAN.
- Do not expose unprotected HYDRO BAN Preformed Bench to sun or weather for more than 30 days.
- Do not expose to rubber solvents or ketones.
- Must be covered with ceramic tile, stone, finish. Use protection board for temporary cover prior to finishing.

Note: Surfaces must be structurally sound, stable and rigid enough to support ceramic/stone tile, thin brick and similar finishes. Substrate deflection under all live, dead and impact loads, including concentrated loads, must not exceed L/360 for thin bed ceramic tile/brick installations or L/480 for thin bed stone installations and L/600 for all exterior veneer applications where L=span length.

Cautions

Consult MSDS for more safety information.

- During cold weather, protect finished work from traffic until fully cured.
- For white and light-colored marble, use a white Latex Portland Cement Thin Set Mortar.
- For green and moisture sensitive marble, agglomerates and resin backed tile and stone use LATAPOXY® 300 Adhesive (refer to Data Sheet 633.0).
- If the waterproof coating on the HYDRO BAN Preformed Bench is punctured during installation or from job site construction activity recoat the punctured area and 2" (50 mm) around the area with two coats of HYDRO BAN, follow DS 663.0 and DS 663.5 for full instructions.

4. TECHNICAL DATA

Waterproofing membrane meets ANSI A118.10.

5. INSTALLATION

Preparatory Work

- The shower should be waterproofed in accordance with Tile Council of North America (TCNA) guidelines, LATICRETE® installation instructions and all other applicable local codes before installing a HYDRO BAN® Preformed Bench. Follow DS 663.0 and DS 663.5 instructions to use HYDRO BAN as a waterproofing membrane.
- Ensure that walls are square and plumb for proper fit of bench.
- The area where the HYDRO BAN Preformed Bench is to be installed must be level/free of slope in order for the bench to fit the walls. Shower pan installations will be sloped 1/4" (6 mm) per foot. Use a medium bed, polymer fortified mortar (e.g. 255 MULTIMAX™) under and behind the bench in order to make sure the bench is installed square to the walls. Test fit the bench to ensure proper fit against wall area. Adjust as necessary. Add a slight pitch to the top of the bench when installing tile or stone in order to prevent water puddling.

Installation

- The 35" L x 11.5" W x 20" H (89 cm x 29 cm x 51 cm) rectangular bench will fit a 36" wide pre-sloped shower pan from side to side.
- The 11.5" L x 11.5" W x 20" H (29 cm x 29 cm x 51 cm) square bench can be used in a corner or can be combined with the 35" rectangular bench to use in a 48" wide pre-sloped shower pan.
- Apply a medium bed, polymer fortified mortar to the floor under and walls behind the HYDRO BAN Preformed Bench, using a 1/2" x 1/2" square notched trowel. Skim coat the back and bottom of the preformed bench to insure full coverage. When installing a bench in a corner, apply thin-set to two walls and skim coat the two sides which will be adhered to the walls.
- Alternatively, apply HYDRO BAN Adhesive & Sealant to the bottom and back side of the HYDRO BAN Preformed Bench. Apply a 1/4" (6 mm) bead of HYDRO BAN Adhesive & Sealant around the perimeter of the bottom and sides, which will be adhered to the wall and bottom, about 1" (25 mm) from edge. Apply another bead of HYDRO BAN Adhesive & Sealant to the surface inside the perimeter bead making "ww" shapes so each run is 2" to 3" (50 to 75 mm) apart. When installing a bench in a corner, apply the HYDRO BAN Adhesive & Sealant to the two sides which will be adhered to the walls.
- Slide bench into place, flattening the ridges and ensuring complete coverage of thin-set or HYDRO BAN Adhesive & Sealant. Remove excess LATICRETE polymer fortified thin-set or HYDRO BAN Adhesive & Sealant from the walls and floor after the HYDRO BAN Preformed Bench is firmly bedded in place. Allow installation to dry prior to applying HYDRO BAN.
- Coat the coves and corners formed by the bench and wall intersections with two coats of HYDRO BAN, follow DS 663.0 and DS 663.5 for full instructions.
- Install tile according to TCNA guidelines and LATICRETE installation instructions using 254 Platinum.

Note: On the wall, trowel thin-set horizontally.

See The Details Below For The Following Applications:

- HYDRO BAN Preformed Bench over the HYDRO BAN Pre-Sloped Shower Pan (see ES- WP307).
- HYDRO BAN Preformed Bench over previously installed ceramic tile or stone (see ES- WP308).
- HYDRO BAN Preformed Bench over 3701 Fortified Mortar Bed with HYDRO BAN Bonding Flange Drain (see ES- WP309).
- HYDRO BAN Preformed Bench over the 3701 Fortified Mortar Bed in a traditional shower pan installation. (see ES- WP310).

6. AVAILABILITY AND COST

Availability

LATICRETE and materials are available worldwide.

For Distributor Information, Call:

Toll Free: 1.800.243.4788

Telephone: +1.203.393.0010

For on-line Distributor information, visit LATICRETE at

www.laticrete.com.

Cost Contact a LATICRETE Distributor in your area.

7. WARRANTY

See 10. FILING SYSTEM:

DS 230.13: LATICRETE Product Warranty (United States and Canada)

A component of:

DS 230.10APD: LATICRETE 10 Year Tile & Stone System Warranty (United States and Canada)

DS 025.0APD: LATICRETE 25 Year Tile & Stone System Warranty (United States and Canada)

DS 230.99: LATICRETE Lifetime Tile & Stone System Warranty (United States and Canada)

8. MAINTENANCE

LATICRETE and LATAPOXY grouts require routine cleaning with a neutral pH soap and water. All other LATICRETE and LATAPOXY materials require no maintenance but installation performance and durability may depend on properly maintaining products supplied by other manufacturers.

9. TECHNICAL SERVICES

Technical Assistance

Information is available by calling the LATICRETE Technical Service Hotline:

Toll Free: 1.800.243.4788, ext. 235

Telephone: +1.203.393.0010, ext. 235

Fax: +1.203.393.1948

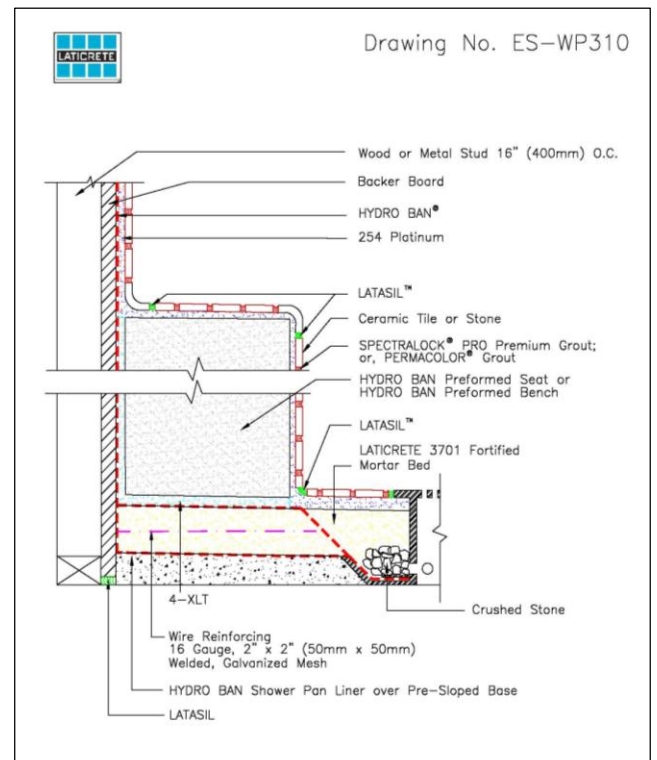
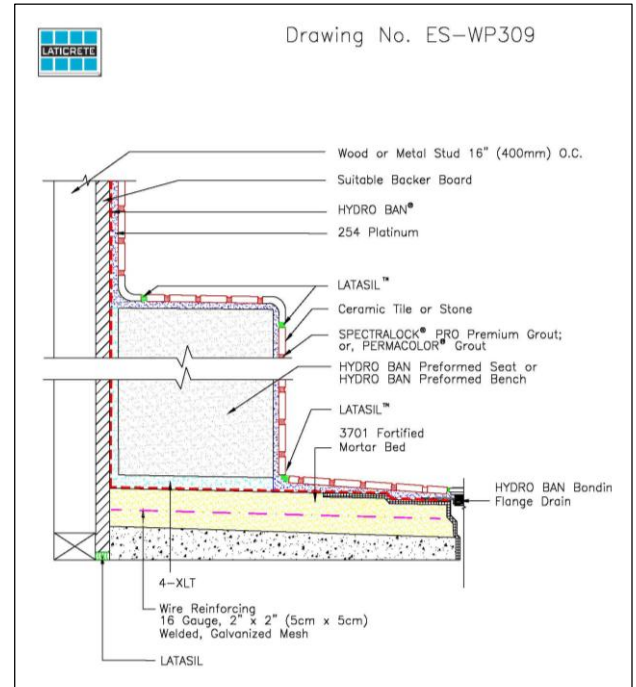
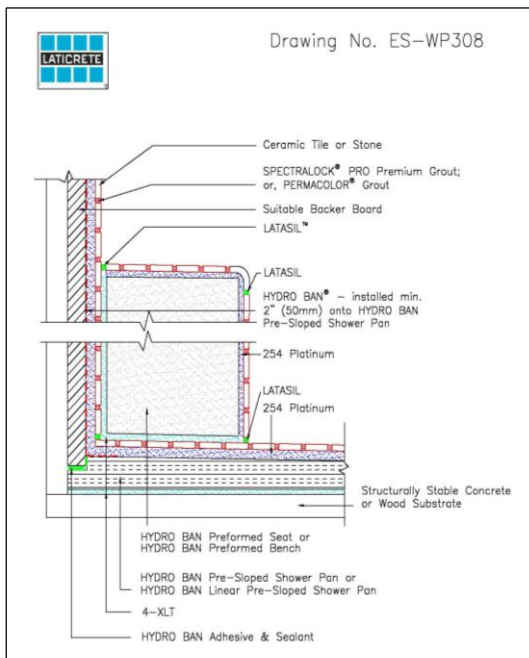
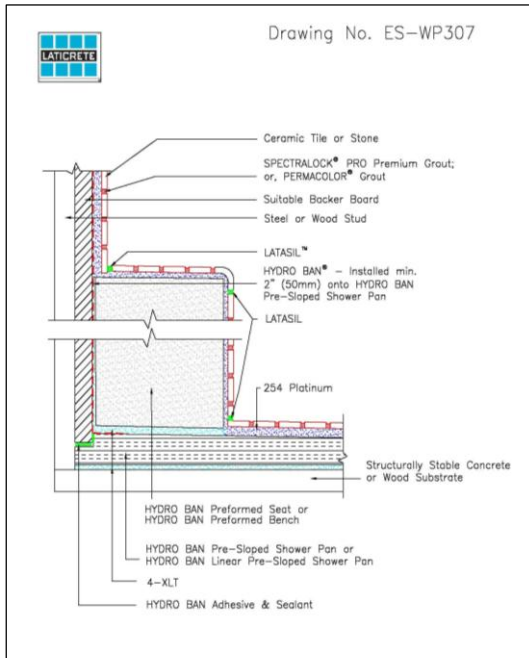
Technical and Safety Literature

To acquire technical and safety literature, please visit our website at www.laticrete.com.

10. FILING SYSTEM

Additional product information is available on our website at www.laticrete.com. The following is a list of related documents:

- DS 230.13: LATICRETE® Product Warranty (United States and Canada)
- DS 230.10APD: LATICRETE 10 Year Tile & Stone System Warranty (United States and Canada)
- DS 025.0APD: LATICRETE 25 Year Tile & Stone System Warranty (United States and Canada)
- DS 230.99: LATICRETE Lifetime Tile & Stone System Warranty (United States and Canada)
- DS 108.0: HYDRO BAN® Adhesive and Sealant
- DS 255.0: MULTIMAX™
- DS 633.0: LATAPOXY® 300 Adhesive
- DS 663.0: HYDRO BAN
- DS 677.0: 254 Platinum



LATICRETE International, Inc.
One LATICRETE Park North, Bethany, CT 06524-3423 USA • 1.800.243.4788 • +1.203.393.0010 • www.laticrete.com

©2014 LATICRETE International, Inc.
All trademarks shown are the intellectual properties of their respective owners.